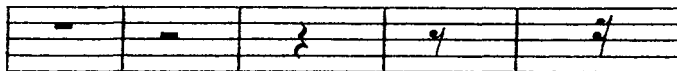


Music Theory for Barbershop Arrangers

- The Great Staff



- Note and Rest Values



whole rest half rest quarter rest eighth rest sixteenth rest

Whole note:



Half note:



Quarter note:



Eighth note:



Sixteenth note:



- Time Signatures

4/4 or C Common Time

♢ Cut Time (written 4/4, sung 2/2)

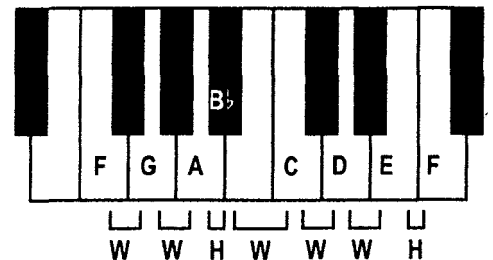
3/4 Waltz Time

6/8

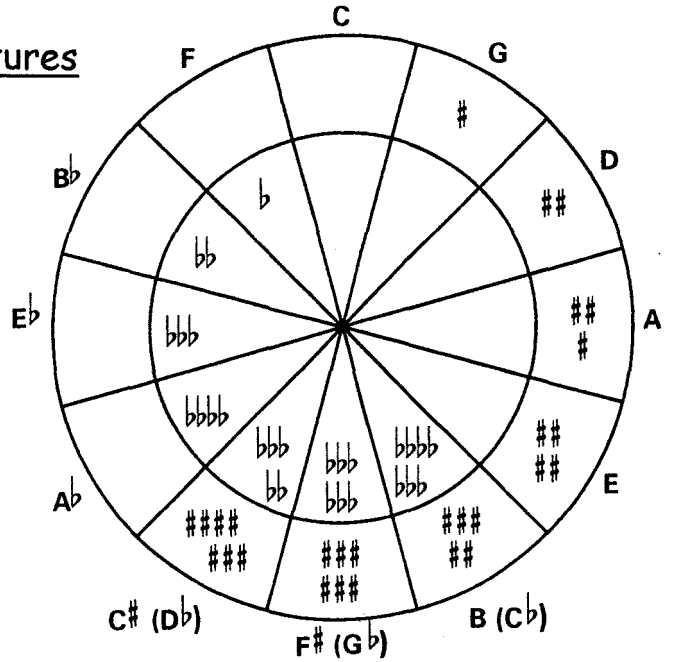
- Scales & Tetrachords



C D E F G A B C
1 2 3 4 5 6 7 8
do re mi fa sol la ti do



- Circle of Fifths & Key Signatures



- Intervals

- Song Selection

Melody

Implied Harmony & Harmonic Progression

Rhythm

Lyrics

Form

- Analyze a song

The Eleven Chords of Barbershop

Root Movement—Circle of Fifths (again!)

- Arrange a song

The musical notation shows a four-part vocal arrangement. The top staff is a treble clef with a melody. The bottom staff is a bass clef with a bass line. The four parts are labeled TENOR, LEAD, BARITONE, and BASS. The notation shows a sequence of notes across four measures, with the LEAD and BASS parts having a descending line and the TENOR and BARITONE parts having an ascending line.